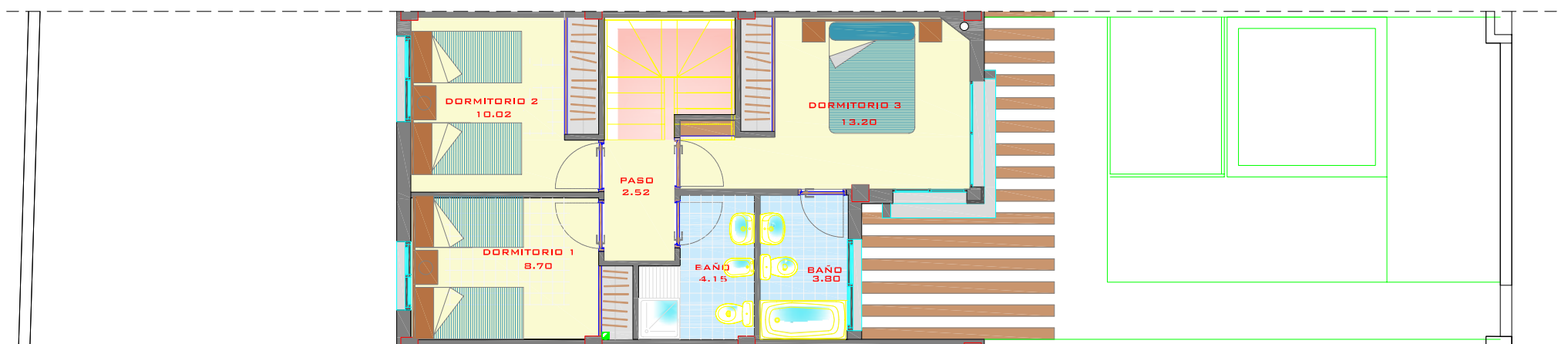
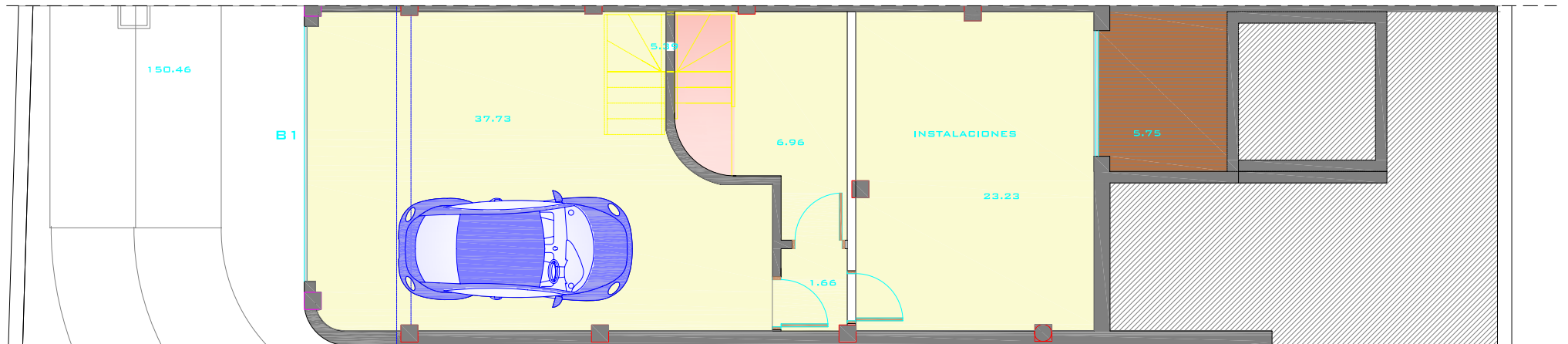


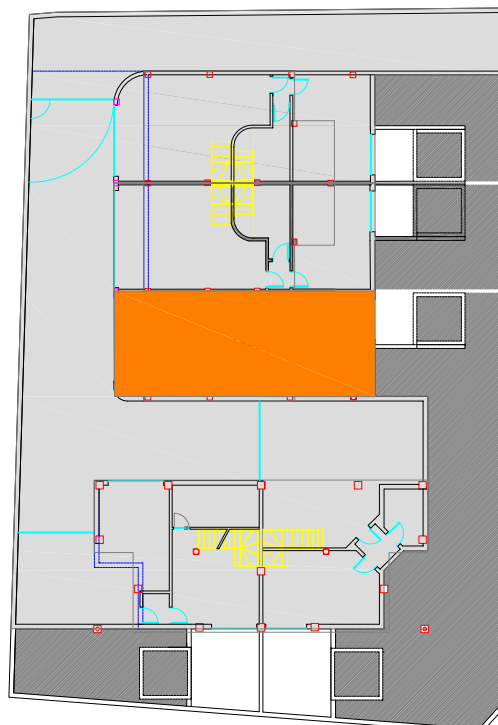
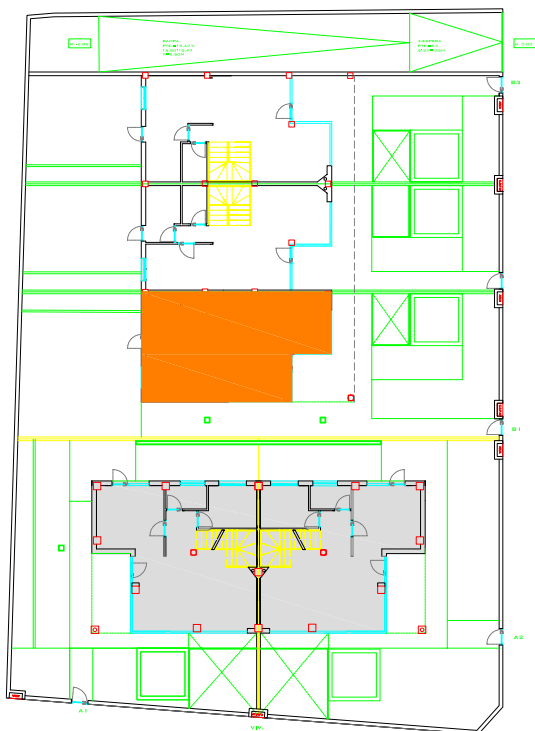
PLANTA BAJA



PLANTA PRIMERA



PLANTA SÓTANO



VIV. TIPO C	
SUP. PARCELA	210.71 M2
SUP. EDIFICADA P.B.	55.70 M2
SUP. LIBRE	155.01 M2

	SUP. UTIL	S. CONS.
VIV. TIPO C		
PLANTA SOTANO	74.97 M2	83.03 M2
PLANTA BAJA	49.52 M2	55.70 M2
PLANTA PRIMERA	42.39 M2	50.78 M2
TOTAL	166.88 M2	189.51 M2

VIVIENDA TIPO C



VIVIENDAS EN ALQUERIAS